

# How to defend your organization from all **13 email threat types.**

PRESENTED BY



---

# Host Speaker

Tom McAllister

Director of Marketing

CMIT Solutions



# The CMIT Solutions support network.

**83,000**  
Users Protected

**276**  
Locations

**900**  
Technicians

**29 Years**  
In the Technology Space



Local Support  
National Reach

---

# Expert Speaker

Kyle Marsan

Sr. Systems Engineer

Barracuda

**cmIT Solutions**<sup>®</sup>  
Your Technology Team





# Barracuda Overview

We are here to protect and support our customers for life.

We deliver innovative security products that are easy to buy, deploy, and use.

Comprehensive MSP-focused security solutions:

**Email** | **Network and Cloud Application** | **Data Protection**  
**Security-centric RMM** | **Managed XDR with 24x7 SOC**



POLL ALERT

Complete this sentence,  
"95% of cyber attacks..."

Let us know using the poll launched on your screen  
for a chance to win some **Barracuda MSP Swag!**

On average, there is a **cyberattack**  
every **39 seconds**



**95%** of all **cyber incidents** are  
**human-enabled**

# Impact of email attacks on organizations

**493M**

Ransomware attacks  
in 2023

**43%**

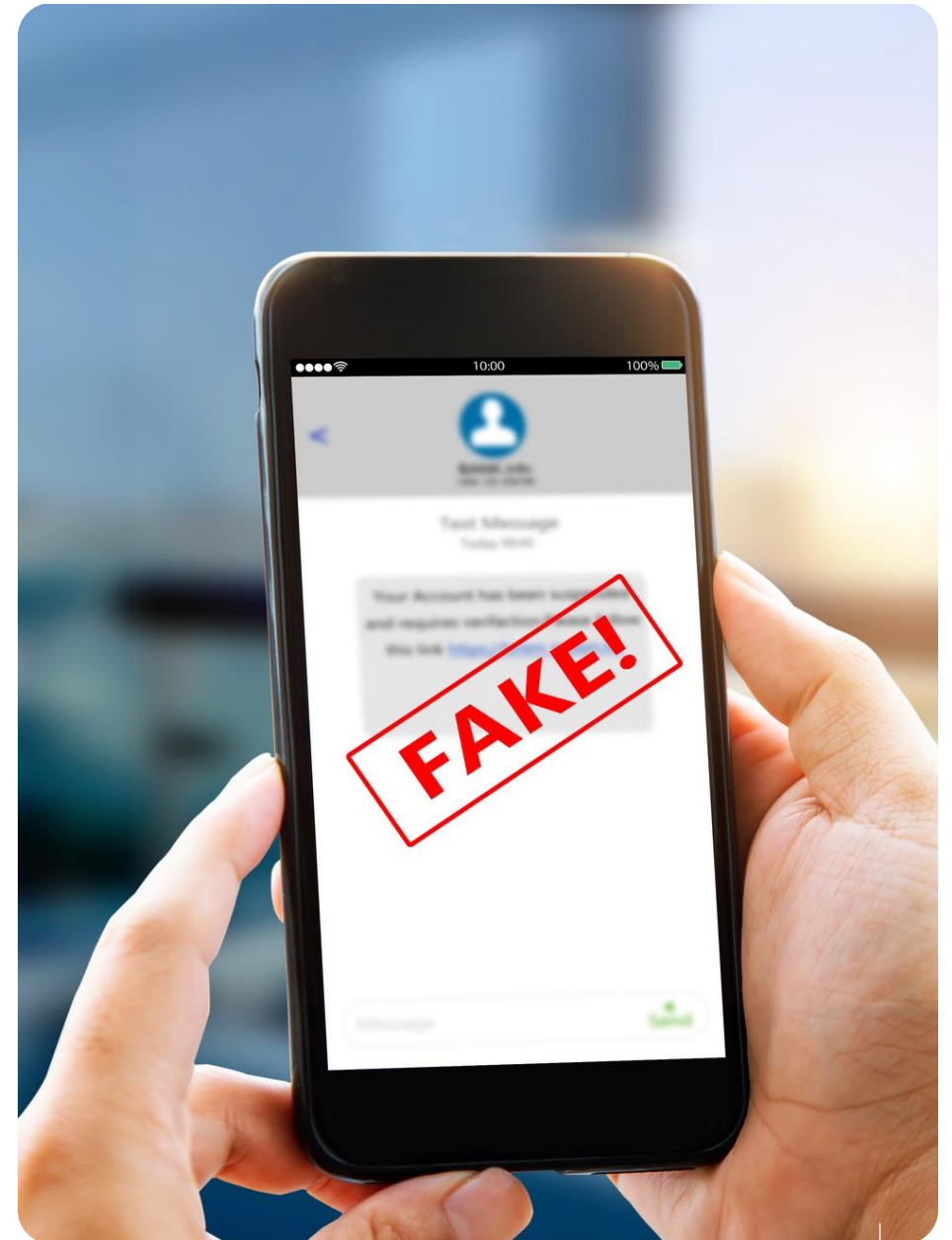
of all cyber attacks  
are on SMBs

**1 in 4**

organizations had at  
least one email account  
compromised in 2023

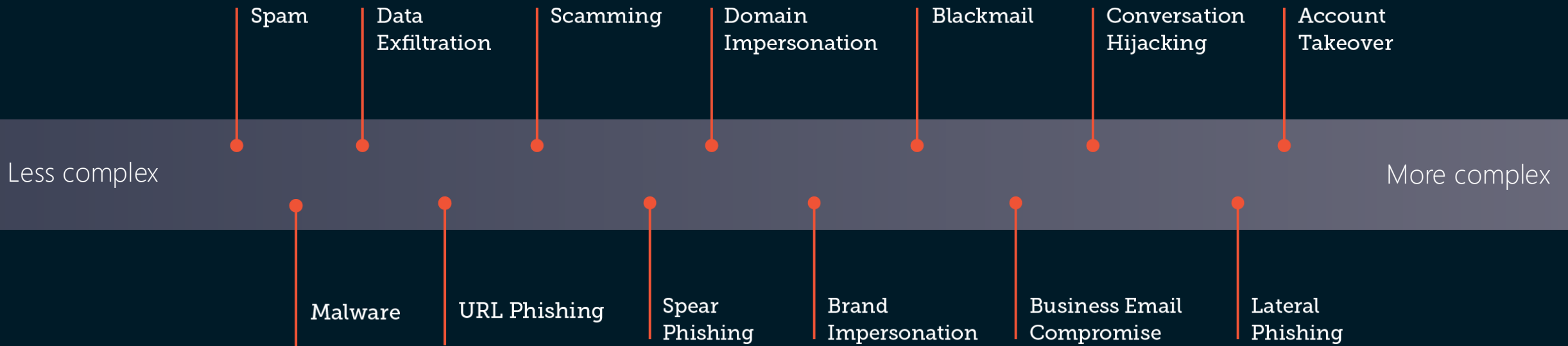


# Email threat trends



# Email attack complexity is increasing

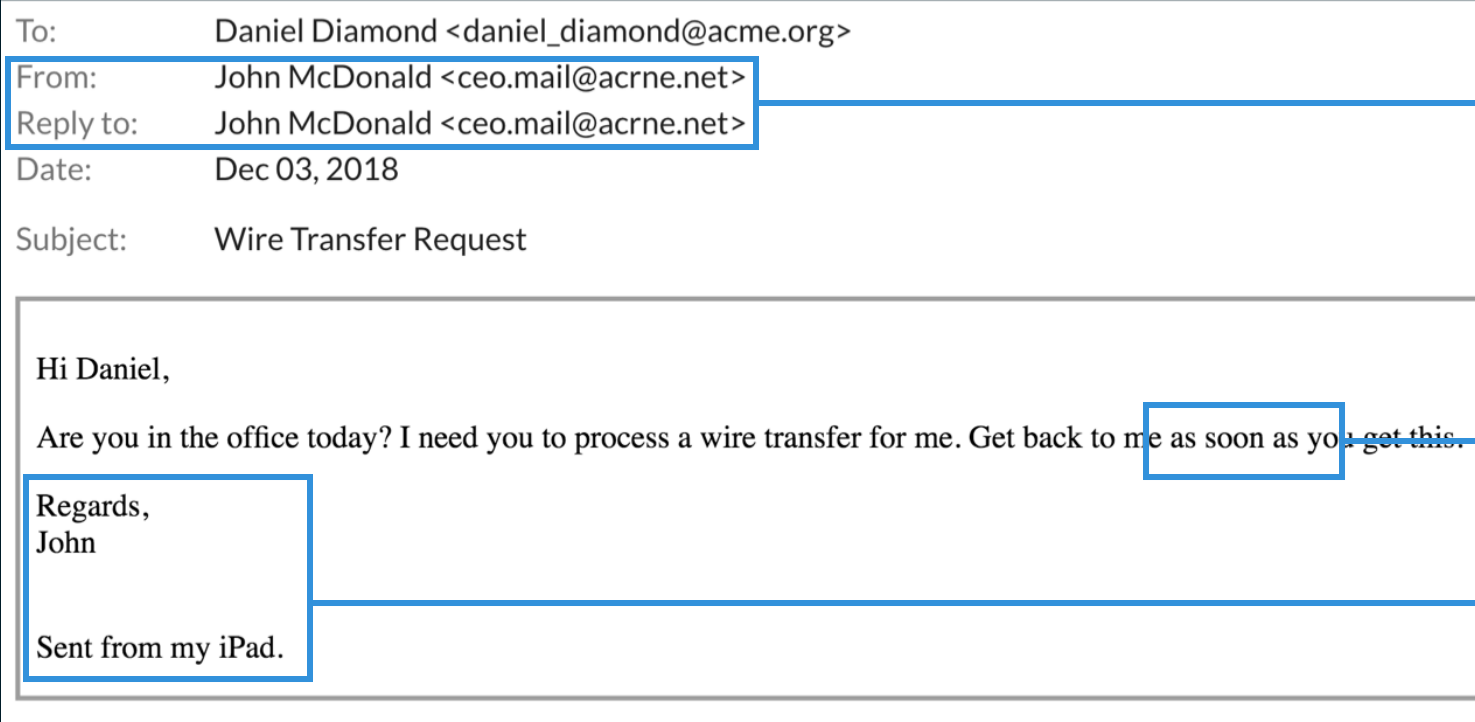
## Introducing the email threat taxonomy



# Business Email Compromise decoded

Threat type

Business Email  
Compromise



1. Impersonation techniques

2. Sense of urgency

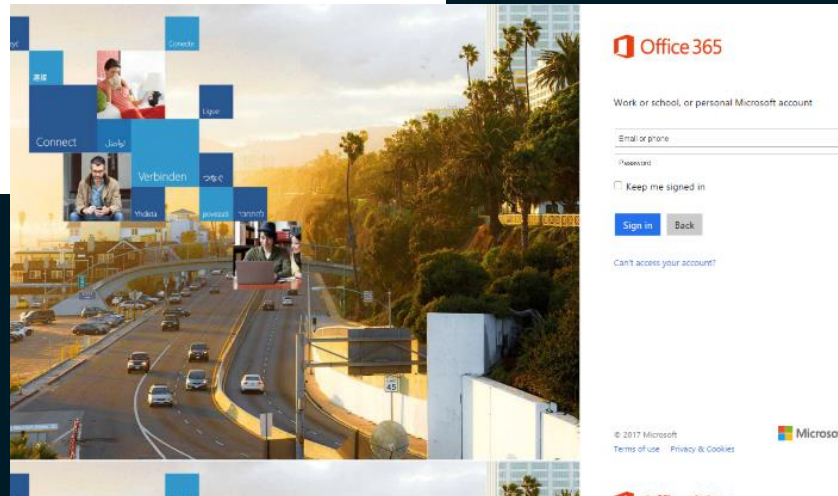
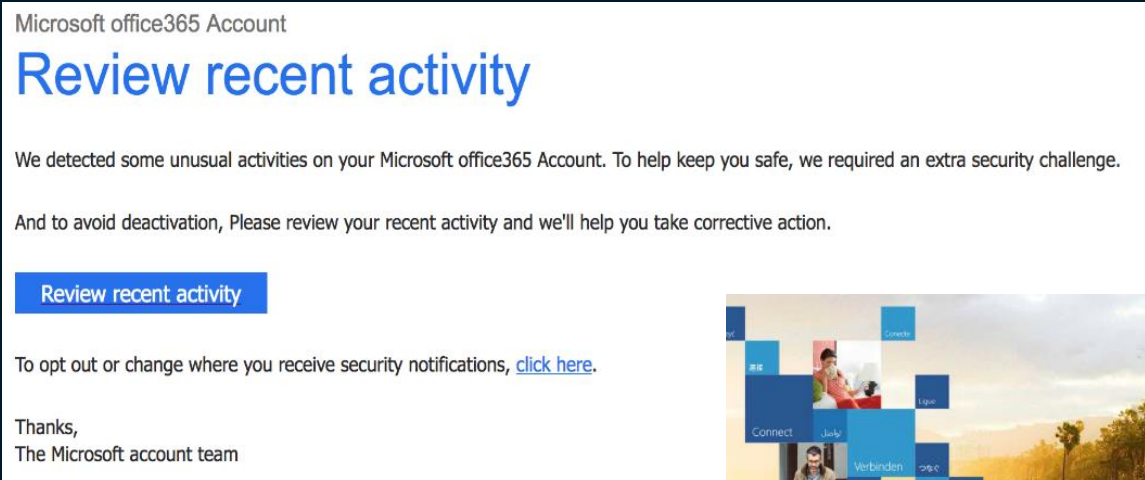
3. From an authority / executive

High reputation senders | No links | No attachments

# Service Impersonation decoded

1. No malicious payload

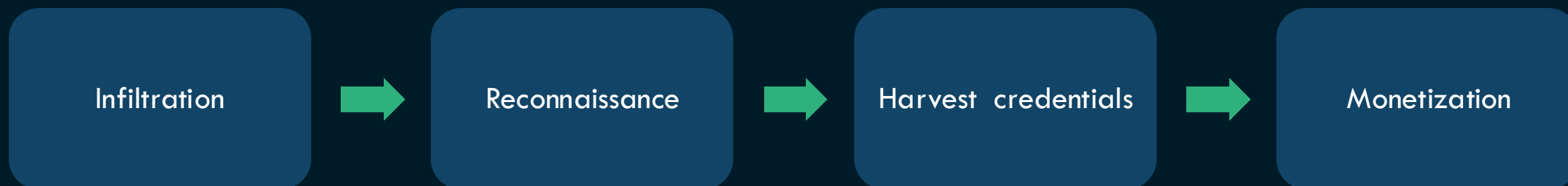
2. Hosted on high reputation domain



3. Unusual email address and landing page

# Account Takeover decoded

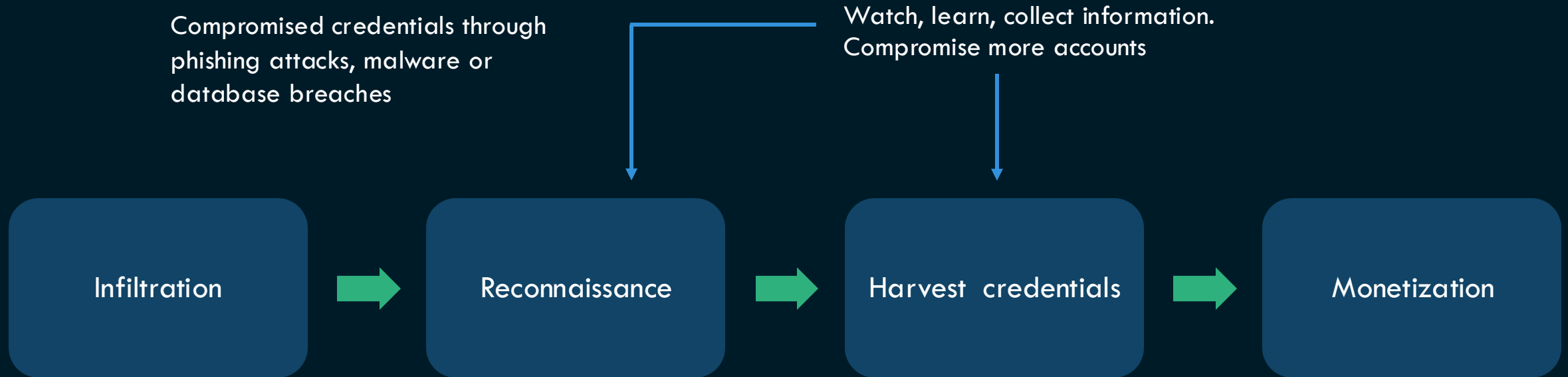
Compromised credentials through phishing attacks, malware or database breaches



# Account Takeover

Threat type

Account  
Takeover





# Account Takeover

Threat type

Account Takeover

Compromised credentials through phishing attacks, malware or database breaches

Watch, learn, collect information.  
Compromise more accounts



Launch internal and external attacks:  
Distribute malware, commit wire fraud  
and conversation hijacking



POLL ALERT

With the recent boom of artificial Intelligence technologies, do you find that your inbox is being targeted by phishing emails more frequently than before?

Let us know using the poll launched on your screen for a chance to win some **Barracuda MSP Swag!**

Beating threats with  
the right protection



# Two forms of defense. You need both

THREAT TYPES	EMAIL GATEWAY	API-BASED INBOX DEFENSE
Spam	●	○
Malware	●	○
Data Exfiltration	●	○
URL Phishing	◐	●
Scamming	◐	●
Spear Phishing	○	●
Domain Impersonation	○	●
Service Impersonation	○	●
Blackmail	◐	◐
Business Email Compromise	○	●
Conversation Hijacking	○	●
Lateral Phishing	○	●
Account Takeover	○	●

○ Does not provide sufficient protection   ◐ Provides some protection   ● Provides best protection

# Impersonating Matthew Johnson

LDAP rules can miss

To: Lauren Crawl

**From: Matthew Johnson**

Subject: Quick request

---



To: Lauren Crawl

**From: Matthew R. Johnson**

Subject: Quick request

---



To: Lauren Crawl

**From: Johnson Matthew**

Subject: Quick request

---



To: Lauren Crawl

**From: Matt Johnson**

Subject: Quick request

---



# Deceptive language

Content filters can miss

Threat type

Business Email  
Compromise

To: Lauren Crawl  
**From: Matthew Johnson**  
Subject: Quick request



... I need you to process a wire transfer?...

... funds transfer...



... money transfer...



... make a payment ...

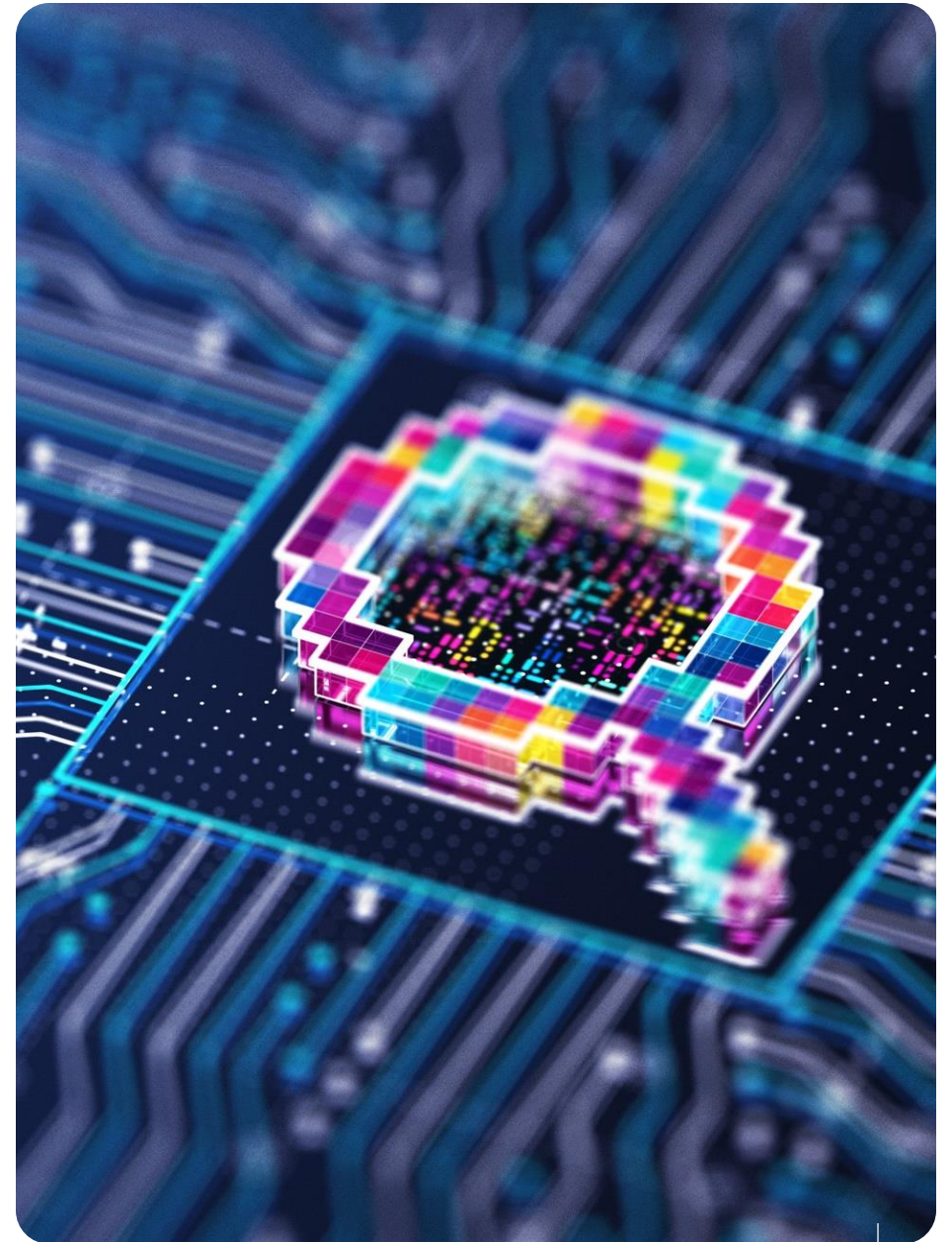


... process invoice...

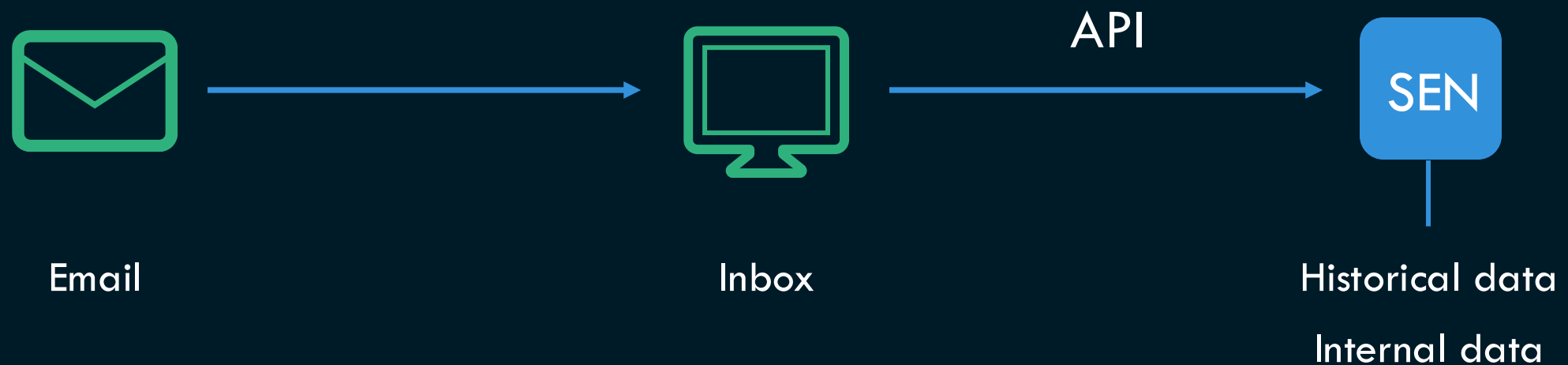




# API-based pros and cons



# What is API-based Inbox Defense?



# API defense: less effective for high volume attacks

## Spam

### Gateway:

Blocked before it hits mail server or inbox

### API Inbox defense:

Can overwhelm the server and impact inbox performance

## Malware

### Gateway:

Signature matching and sandboxing

### API Inbox defense:

Large volume of malware can impact inbox performance

## Data Exfiltration

### Gateway:

DLP and encryption to protect sensitive data

### API Inbox defense:

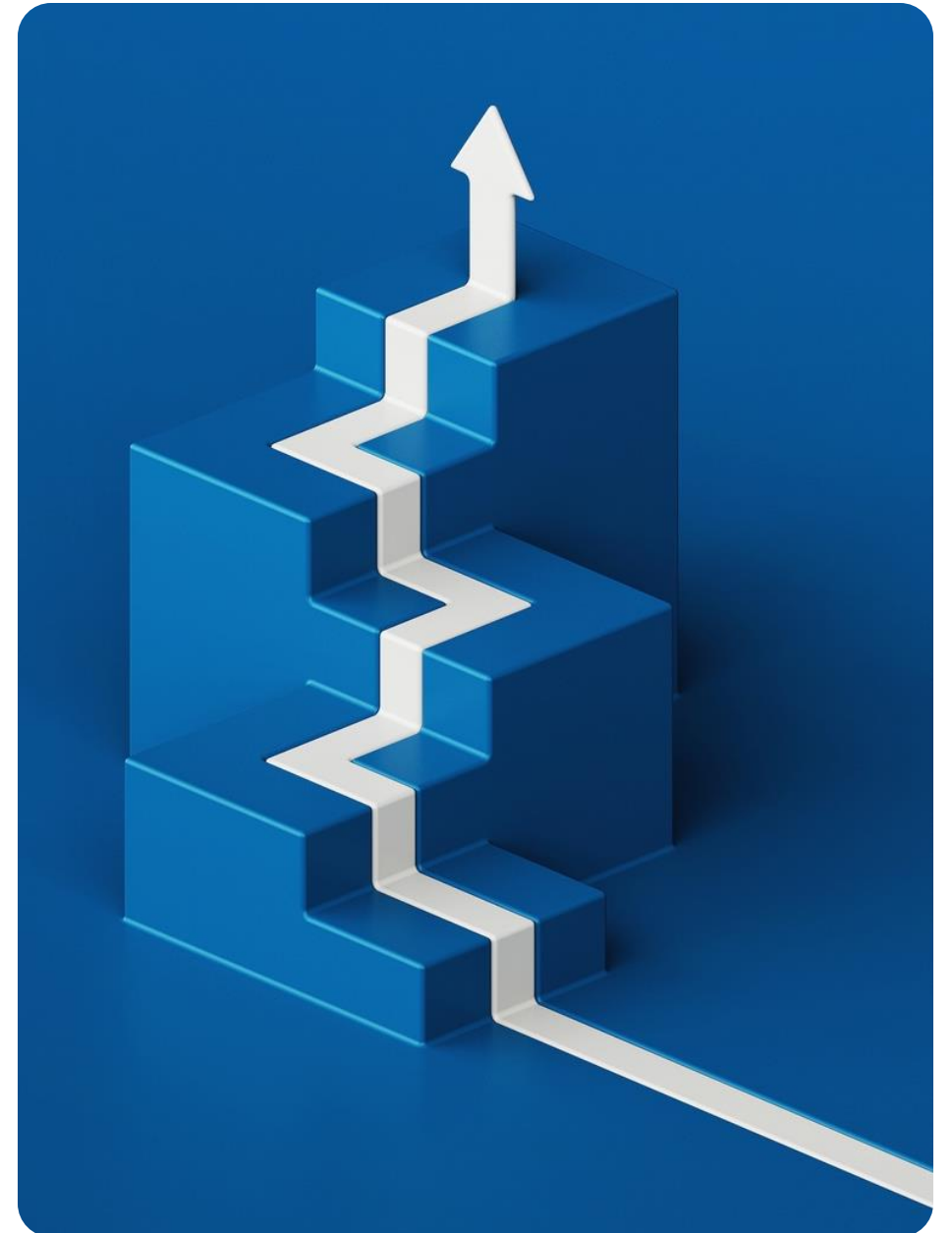
APIs can't remediate lost data post delivery

POLL ALERT

Do you feel your organization is adequately protected against evolving email-born threats?

Let us know using the poll launched on your screen for a chance to win some **Barracuda MSP Swag!**

# Strategies to improve your email protection



# Multi-layered email protection





# Next Steps

STEP

## One

Protect against all 13 threats  
with Email gateway and API-  
based inbox defense

STEP

## Two

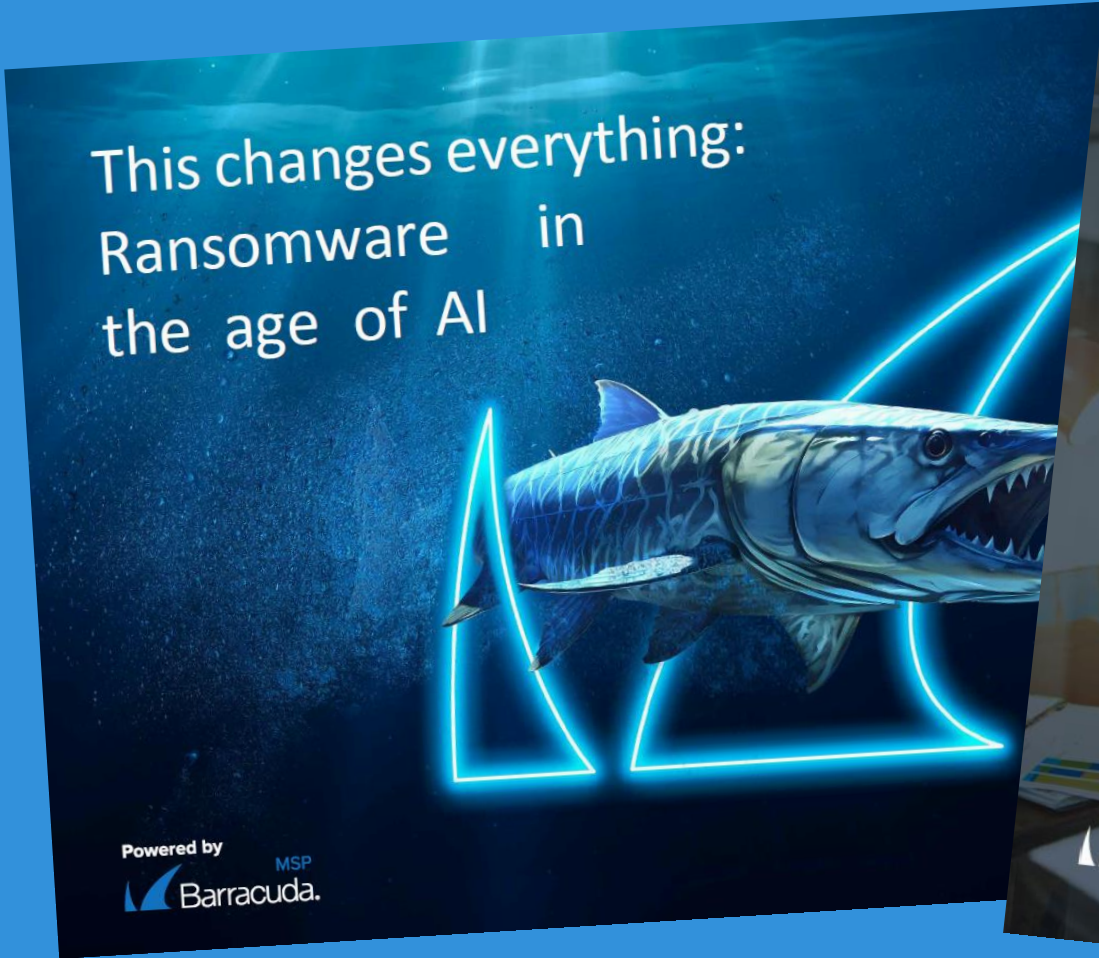
Educate your employees on the  
latest email threats

STEP

## Three

Monitor, automate &  
streamline incident response

# Resources



# Get started today

- Request a free Microsoft 365 Email Threat Scan
- Identify gaps in your current email protection
- Easy to complete
- Fast results

Detect email threats that got past your email gateway.

**37**  
Fraudulent emails

**130**  
Employees at risk

**7**  
Domain fraud risks

**393**  
Mailboxes

Last received	Recipients	Sample recipient	Email
May 31, 2019 9:07 AM	2	Terrylyn Crowover Accounts Payable Clerk terrylyn.crowover@acme-corp.com	Urgent From: Maribel Cupter maribel.p001@msn.com
May 15, 2019 8:50 AM	1	Amade Over Chief Financial Officer	Quick one? From: Callie Strahl

**Fraud summary**

Our artificial intelligence platform understands email sender intent to detect anomalies such as email impersonation and account takeover.

**5,000+ organizations**

have run this scan and discovered advanced threats in their Office 365 mailboxes.

**8,000+**  
scans completed  
since 2018

**8.5 million**  
mailboxes  
have been scanned for threats

**4 million**  
spear phishing attacks  
identified to date

# Get in Touch!



Have questions or would like to book a complimentary one-on-one consultation about your organization's cybersecurity needs? **Get in touch today.**



*Scan me*

<https://cmitsolutions.com/it-services/cybersecurity/>





---

# Thank you

PRESENTED BY

